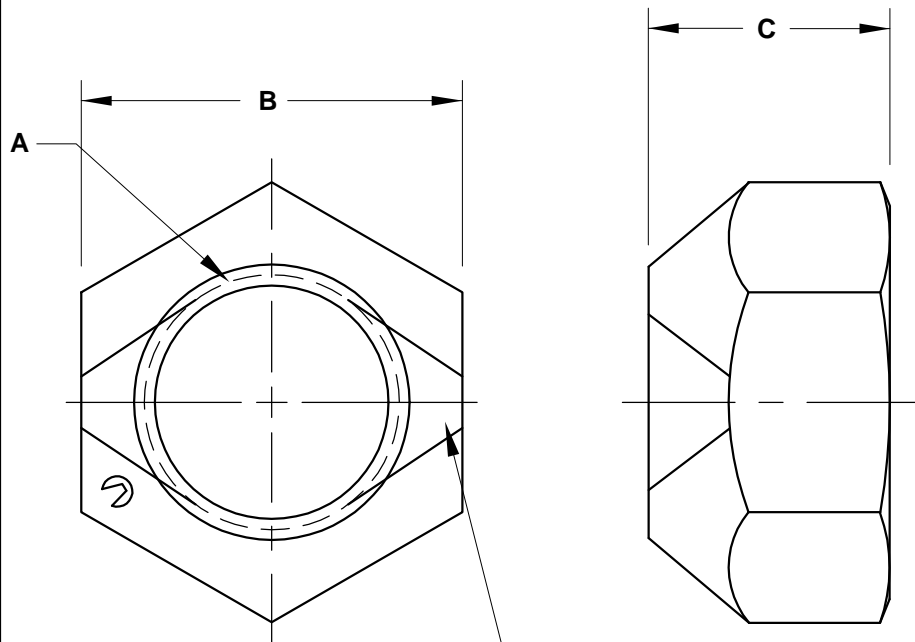


**REVISIONS**

**PART NO. ALNA**



SHAPE, SIZE AND LOCATION OF THE PREVAILING TORQUE ELEMENT OPTIONAL

SIZE A	ZINC PLATED PART NUMBER	CADMIUM PLATED PART NUMBER	WIDTH ACROSS FLATS max / min B	THICKNESS max / min C
1/4-20	25CALNAZ	25CALNAC	.4385 - .428	.288 - .212
5/16-18	31CALNAZ	31CALNAC	.5020 - .489	.336 - .258
3/8-16	37CALNAZ	37CALNAC	.5645 - .551	.415 - .320
7/16-14	43CALNAZ	43CALNAC	.6895 - .675	.463 - .365
1/2-13	50CALNAZ	50CALNAC	.7520 - .736	.573 - .427

**NOTES**

**MATL.: STEEL**

**APPROVAL**

QC VC 10-11-05

UNLESS OTHERWISE INDICATED, DIMENSIONAL, MECHANICAL AND PERFORMANCE REQUIREMENTS PER IFI 100/107

**AUTOMATION LOCKNUTS  
GRADE A**



DATE	DRAWN BY	SCALE	UNITS	DWG. TYPE	REV.
10-7-05	MP	NONE	INCH	S	0