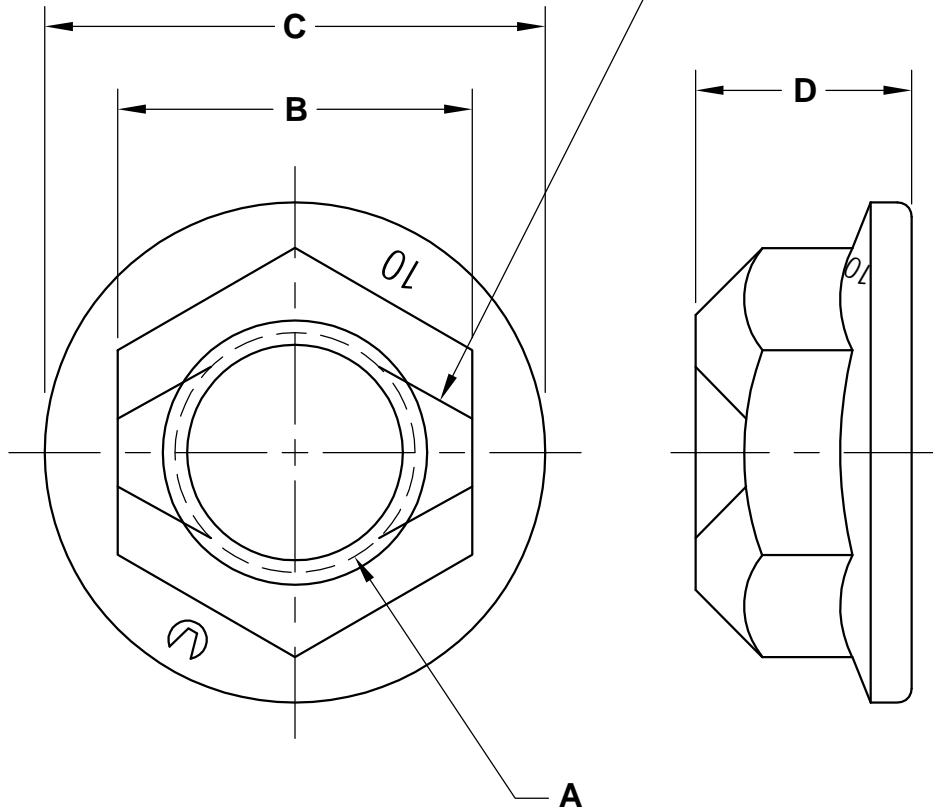


REVISIONS

PART NO. CFA1

SHAPE, SIZE AND LOCATION OF THE LOCKING ELEMENT OPTIONAL



SIZE A	PART NUMBER	WIDTH ACROSS FLATS B	FLANGE DIAMETER MAX. C	NUT THICKNESS MAX. D
M6x1	.6CCFA1	10.00 - 9.78	14.20	7.00
M8x1.25	.8CCFA1	13.00 - 12.73	17.60	9.10
M10x1.5	.10CCFA1	15.00 - 14.73	21.50	11.40
M12x1.75	.12CCFA1	18.00 - 17.73	25.60	13.00
M14x2	.14CCFA1	21.00 - 20.67	29.60	15.90
M16x2	.16CCFA1	24.00 - 23.67	34.20	18.30
M20x2.5	.20CCFA1	30.00 - 29.16	43.00	23.40
M24x3	.24CCFA1	36.00 - 35.00	49.00	26.00

NOTES

MATL.: STEEL

FINISH: PLAIN

MECHANICAL AND PERFORMANCE PROPERTIES PER US AUTOMOTIVE STANDARDS

APPROVAL

QC VC 8-24-05

FLANGE CONE LOCKNUT CLASS 10



DATE	DRAWN BY	SCALE	UNITS	DWG. TYPE	REV.
8-23-05	MP	NONE	mm	S	0