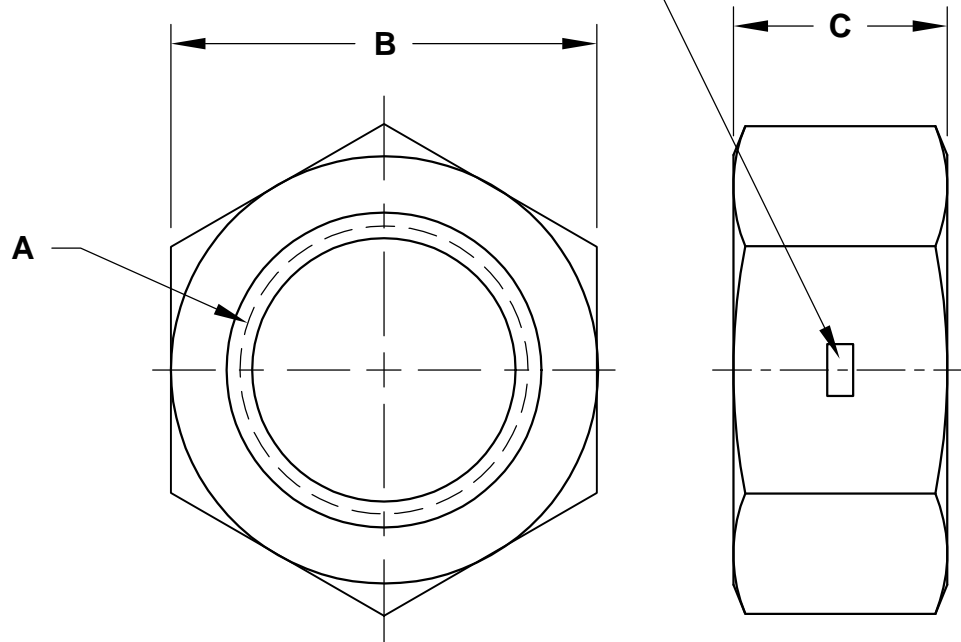


REVISIONS

PART NO. FHCA

SHAPE, SIZE AND LOCATION OF THE PREVAILING TORQUE ELEMENT OPTIONAL



SIZE A	ZINC PLATED PART NUMBER	WIDTH ACROSS FLATS max / min B	THICKNESS max / min C
8-32	8CFHCAZ	.345 - .332	.191 - .117
10-24	10CFHCAZ	.376 - .362	.241 - .117
10-32	10FFHCAZ		
1/4-20	25CFHCAZ	.4385 - .428	.288 - .212
1/4-28	25FFHCAZ		
5/16-18	31CFHCAZ	.502 - .489	.336 - .258
5/16-24	31FFHCAZ		
3/8-16	37CFHCAZ	.5645 - .551	.415 - .320
3/8-24	37FFHCAZ		
7/16-14	43CFHCAZ	.6895 - .675	.463 - .365
7/16-20	43FFHCAZ		
1/2-13	50CFHCAZ	.752 - .736	.573 - .427
1/2-20	50FFHCAZ		
9/16-12	56CFHCAZ	.877 - .861	.621 - .473
9/16-18	56FFHCAZ		
5/8-11	62CFHCAZ	.9395 - .922	.731 - .535
5/8-18	62FFHCAZ		
3/4-10	75CFHCAZ	1.127 - 1.088	.827 - .617
3/4-16	75FFHCAZ		
7/8-9	87CFHCAZ	1.3145 - 1.269	.922 - .724
7/8-14	87FFHCAZ		
1-8	100CFHCAZ	1.502 - 1.450	1.018 - .831
1-14	100FFHCAZ		

NOTES

MATL.: STEEL

APPROVAL

QC VC 10-20-05

MECHANICAL AND PERFORMANCE REQUIREMENT PER IFI 100/107

FINISHED HEX NUT CENTERLOCK, GRADE A



DATE	DRAWN BY	SCALE	UNITS	DWG. TYPE	REV.
10-11-05	MP	NONE	INCH	S	0