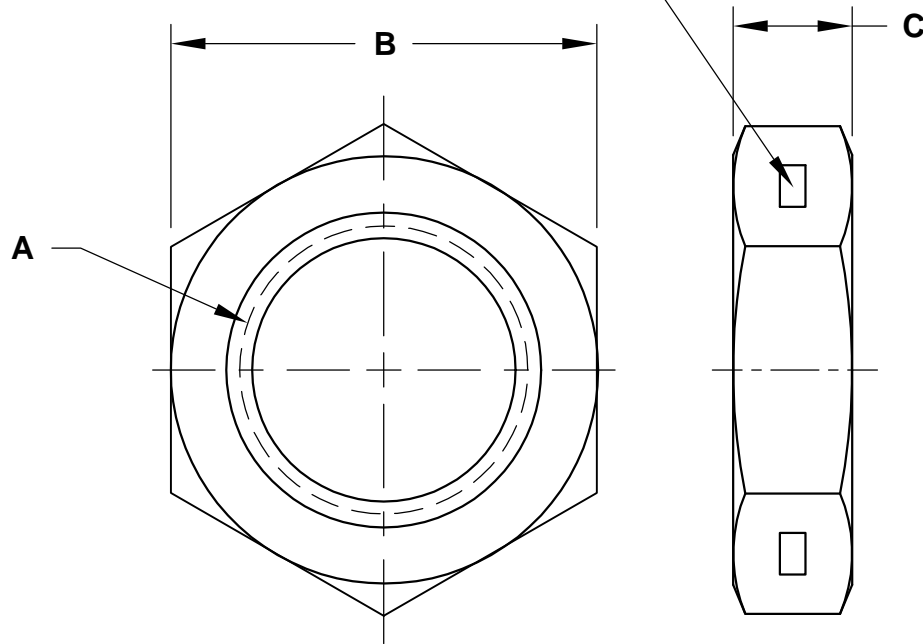


**REVISIONS**

**PART NO. FJCA**

SHAPE, SIZE AND LOCATION OF THE PREVAILING TORQUE ELEMENT OPTIONAL



SIZE A	ZINC PLATED PART NUMBER	WIDTH ACROSS FLATS max / min B	THICKNESS max / min C
1/4-20	25CFJCAZ	.4385 - .428	.163 - .150
1/4-28	25FFJCAZ		
5/16-18	31CFJCAZ	.502 - .489	.195 - .180
5/16-24	31FFJCAZ		
3/8-16	37CFJCAZ	.5645 - .551	.227 - .210
3/8-24	37FFJCAZ		
7/16-14	43CFJCAZ	.6895 - .675	.260 - .240
7/16-20	43FFJCAZ		
1/2-13	50CFJCAZ	.752 - .736	.323 - .302
1/2-20	50FFJCAZ		
9/16-12	56CFJCAZ	.877 - .861	.324 - .301
9/16-18	56FFJCAZ		
5/8-11	62CFJCAZ	.9395 - .922	.387 - .363
5/8-18	62FFJCAZ		
3/4-10	75CFJCAZ	1.127 - 1.088	.446 - .398
3/4-16	75FFJCAZ		
7/8-9	87CFJCAZ	1.3145 - 1.269	.510 - .458
7/8-14	87FFJCAZ		
1-8	100CFJCAZ	1.502 - 1.450	.575 - .519
1-14	100FFJCAZ		

**NOTES**

MATL.: STEEL

**APPROVAL**

QC VC 10-31-05

PREVAILING TORQUE PER IFI 100/107, WHERE APPLICABLE

**HEX JAM NUT CENTERLOCK, GRADE A**



DATE	DRAWN BY	SCALE	UNITS	DWG. TYPE	REV.
10-5-05	MP	NONE	INCH	S	0