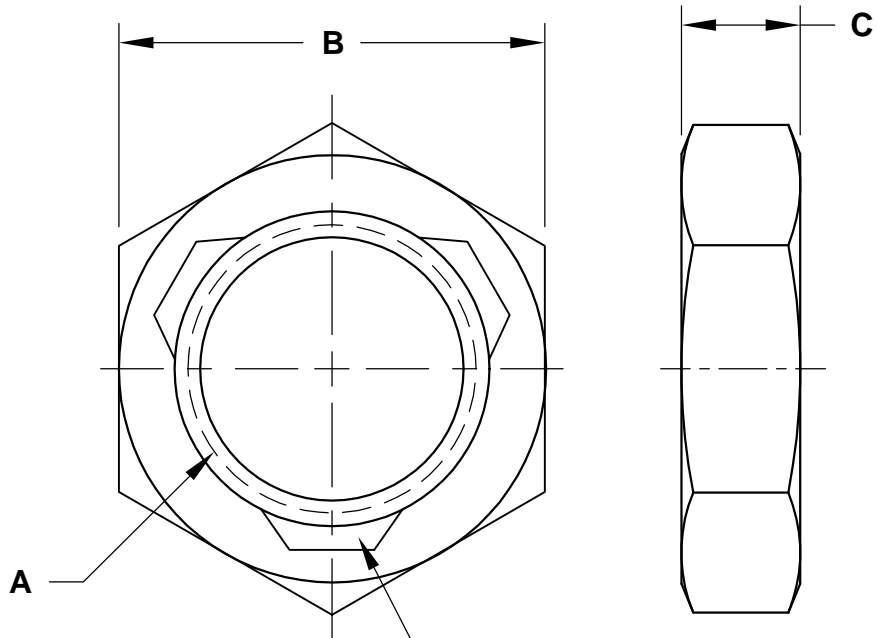


REVISIONS

PART NO. FJPA



SHAPE, SIZE AND LOCATION OF THE PREVAILING TORQUE ELEMENT OPTIONAL

SIZE A	ZINC PLATED PART NUMBER	WIDTH ACROSS FLATS max / min B	THICKNESS max / min C
1/4-20	25CFJPAZ	.4385 - .428	.163 - .150
1/4-28	25FFJPAZ		
5/16-18	31CFJPAZ	.502 - .489	.195 - .180
5/16-24	31FFJPAZ		
3/8-16	37CFJPAZ	.5645 - .551	.227 - .210
3/8-24	37FFJPAZ		
7/16-14	43CFJPAZ	.6895 - .675	.260 - .240
7/16-20	43FFJPAZ		
1/2-13	50CFJPAZ	.752 - .736	.323 - .302
1/2-20	50FFJPAZ		
9/16-12	56CFJPAZ	.877 - .861	.324 - .301
9/16-18	56FFJPAZ		
5/8-11	62CFJPAZ	.9395 - .922	.387 - .363
5/8-18	62FFJPAZ		
3/4-10	75CFJPAZ	1.127 - 1.088	.446 - .398
3/4-16	75FFJPAZ		
7/8-9	87CFJPAZ	1.3145 - 1.269	.510 - .458
7/8-14	87FFJPAZ		
1-8	100CFJPAZ	1.502 - 1.450	.575 - .519
1-14	100FFJPAZ		

NOTES

APPROVAL

HEX JAM NUT TOPLOCK, GRADE A

MATL.: STEEL

QC VC 10-31-05

PREVAILING TORQUE PER IFI 100/107, WHERE APPLICABLE



DATE	DRAWN BY	SCALE	UNITS	DWG. TYPE	REV.
10-5-05	MP	NONE	INCH	S	0