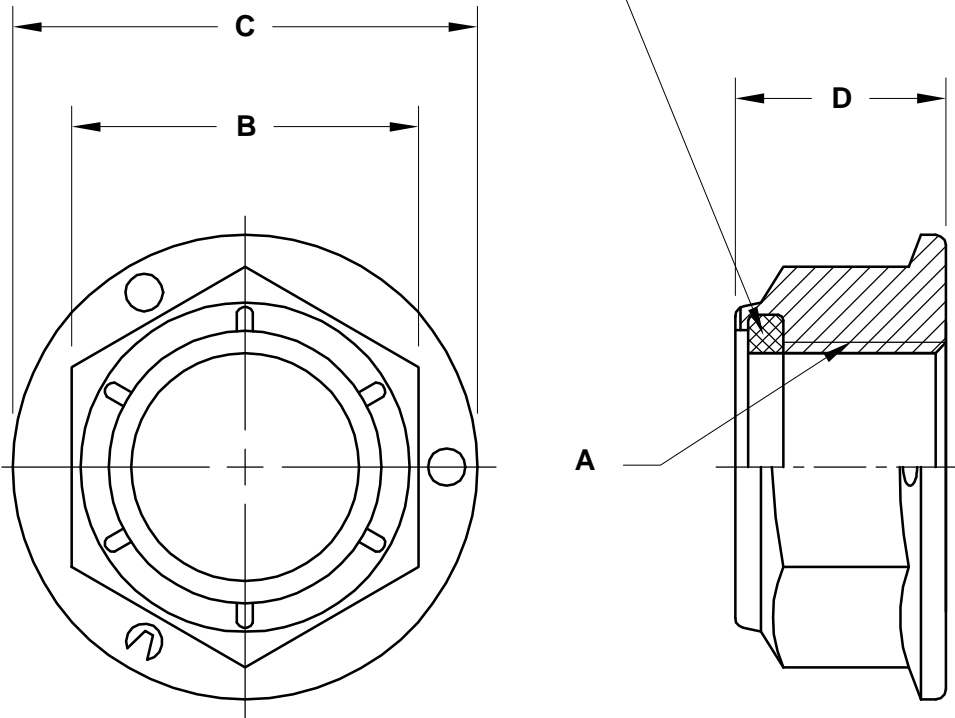


REVISIONS

PART NO. FN-FZ

NYLON INSERT

Color: ORANGE



SIZE A	PART NUMBER	WIDTH ACROSS FLATS B	FLANGE DIA. MAX. C	THICKNESS MAX. D
1/4-20	25CFN-FZ	.438 - .428	.560	.300
1/4-28	25FFN-FZ	.438 - .428	.560	.300
5/16-18	31CFN-FZ	.502 - .489	.680	.365
5/16-24	31FFN-FZ	.502 - .489	.680	.365
3/8-16	37CFN-FZ	.564 - .551	.810	.425
3/8-24	37FFN-FZ	.564 - .551	.810	.425
7/16-14	43CFN-FZ	.689 - .675	.930	.495
7/16-20	43FFN-FZ	.689 - .675	.930	.495
1/2-13	50CFN-FZ	.752 - .736	1.070	.555
1/2-20	50FFN-FZ	.752 - .736	1.070	.555
5/8-11	62CFN-FZ	.939 - .922	1.330	.690
5/8-18	62FFN-FZ	.939 - .922	1.330	.690
3/4-10	75CFN-FZ	1.127 - 1.088	1.585	.825
3/4-16	75FFN-FZ	1.127 - 1.088	1.585	.825

NOTES

MATL.: STEEL | HARDNESS: C 28 MAX.
FINISH: ZINC

1) PREVAILING TORQUE PER IFI 100/107

APPROVAL

QC | VC | 8-4-04

FLANGE NYLON INSERT LOCKNUTS



DATE	DRAWN BY	SCALE	UNITS	DWG. TYPE	REV
8-4-04	MP	NONE	INCH	S	0