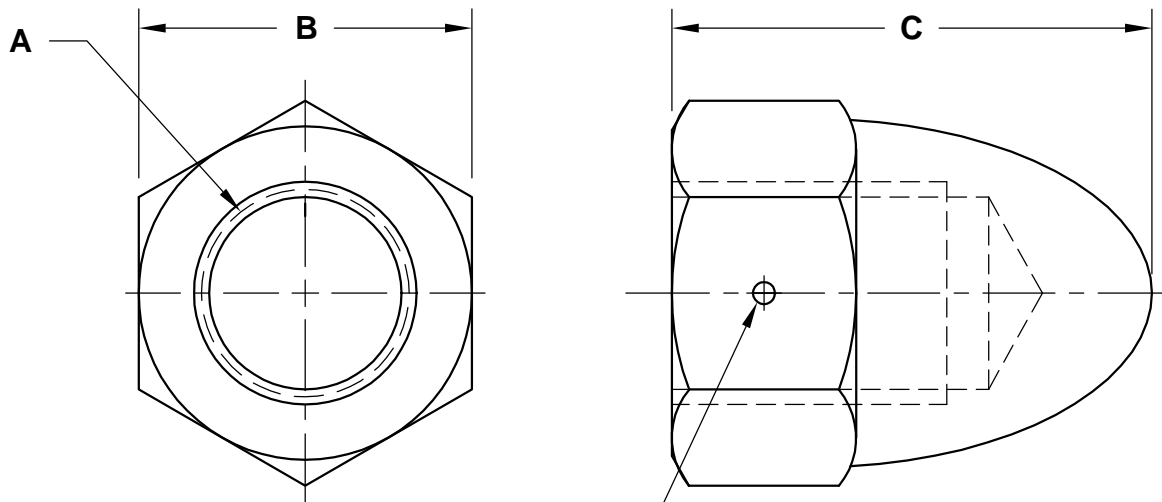


REVISIONS

PART NO. HCN



SHAPE, SIZE AND LOCATION OF THE PREVAILING TORQUE ELEMENT OPTIONAL

SIZE A	ZINC PLATED PART NUMBER	WIDTH ACROSS FLATS B	NUT THICKNESS C
#10-24	10CHCCAZ	.3750 - .362	.52
1/4-20	25CHCCAZ	.4375 - .428	.60
5/16-18	31CHCCAZ	.5000 - .489	.69
3/8-16	37CHCCAZ	.5625 - .551	.79
1/2-13	50CHCCAZ	.7500 - .736	1.03

NOTES

MATL.: STEEL

APPROVAL

QC VC 10-14-05

HIGH CROWN ACORN NUT , CENTERLOCK



DATE	DRAWN BY	SCALE	UNITS	DWG. TYPE	REV.
10-12-05	MP	NONE	INCH	S	0