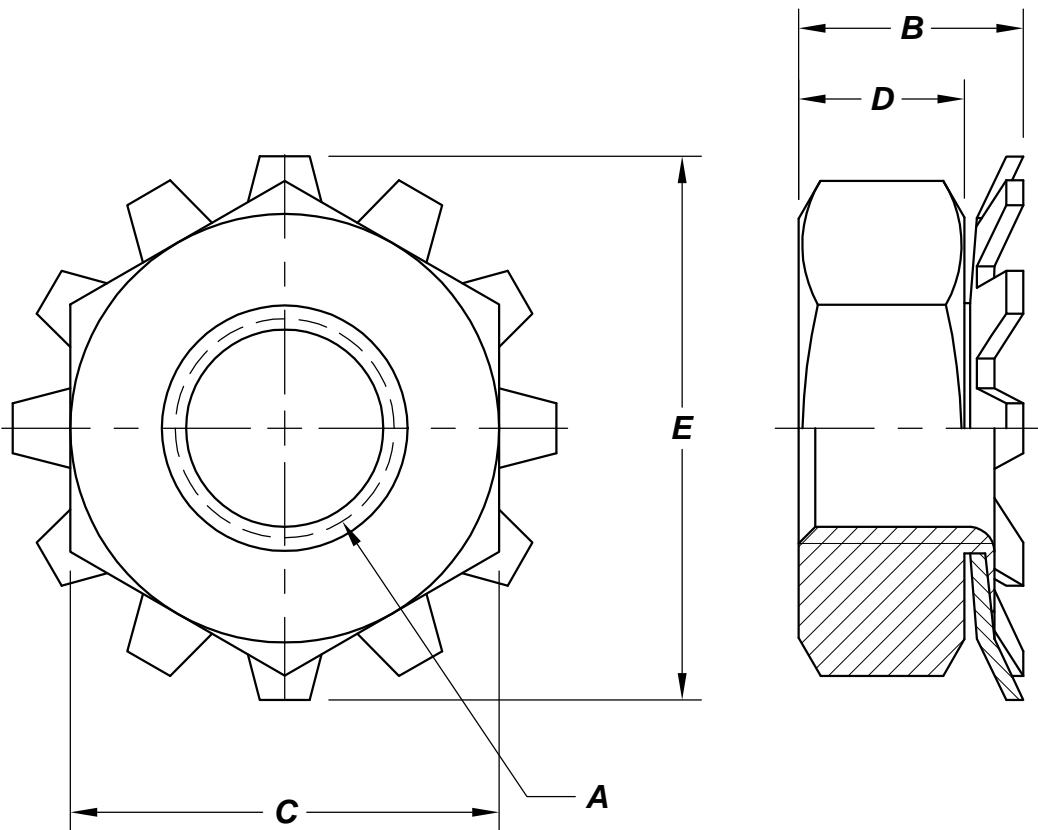


REVISIONS

PART NO. KLNA



SIZE A	ZINC PLATED PART NUMBER	HEIGHT OVERALL B	ACROSS FLATS C	NUT THICKNESS D	WASHER DIAMETER E
4-40	4CKLNAZ	.109	.250	.094	.281
6-32 Sm. Pattern	6CKLNAZ/ small	.109	.250	.094	.281
6-32	6CKLNAZ	.140	.312	.109	.344
8-32	8CKLNAZ	.156	.344	.125	.375
10-24	10CKLNAZ	.158	.375	.125	.406
10-32	10FKLNAZ	.158	.375	.125	.406
1/4-20	25CKLNAZ	.234	.437	.187	.500
1/4-28	25FKLNAZ	.234	.437	.187	.500
5/16-18	31CKLNAZ	.328	.500	.265	.578
5/16-24	31FKLNAZ	.328	.500	.265	.578
3/8-16	37CKLNAZ	.391	.563	.328	.656
3/8-24	37FKLNAZ	.391	.563	.328	.656

NOTES

MATL.: STEEL

APPROVAL

QC VC 10-21-05

K-LOK NUTS



DATE	DRAWN BY	SCALE	UNITS	DWG. TYPE	REV.
10-20-05	MP	NONE	INCH	S	0