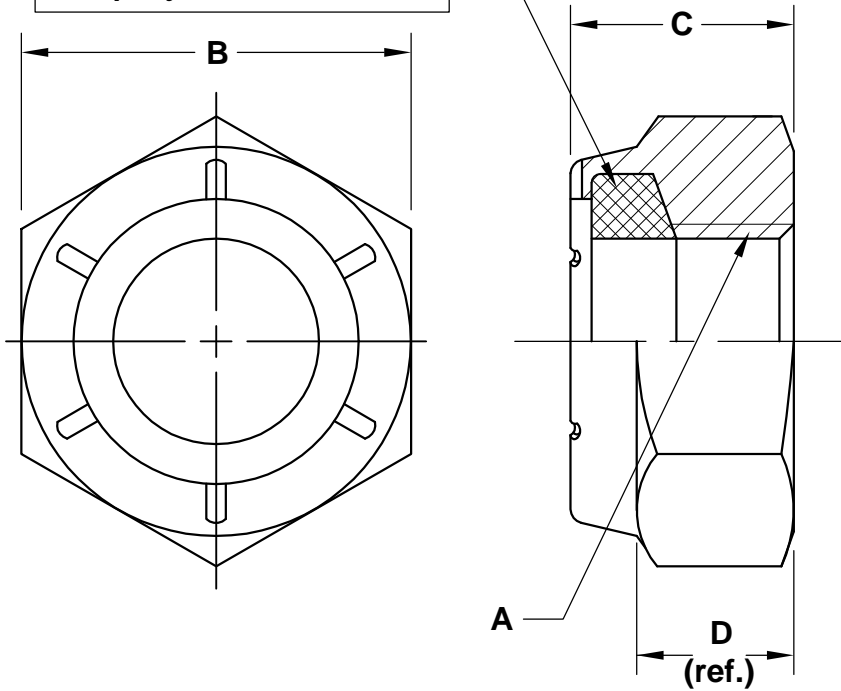


REVISIONS

PART NO. NTU

Orange ring color is the registered manufacturer's I.D. for Aztech Locknut Company.¹



SIZE A	ZINC PLATED PART NUMBER	WIDTH ACROSS FLATS max / min B	THICKNESS max / min C	WRENCH HEIGHT D
1/4-20	25CNTUAZ	.502 - .492	.296 - .266	.194
5/16-18	31CNTUAZ	.564 - .553	.328 - .298	.212
3/8-16	37CNTUAZ	.690 - .679	.421 - .391	.251
7/16-14	43CNTUAZ	.752 - .741	.453 - .423	.316
1/2-13	50CNTUAZ	.877 - .865	.546 - .516	.360
9/16-12	56CNTUAZ	.940 - .928	.578 - .548	.421
5/8-11	62CNTUAZ	1.064 - 1.052	.624 - .594	.428
5/8-18	62FNTUAZ			
3/4-10	75CNTUAZ	1.252 - 1.239	.718 - .688	.488
3/4-16	75FNTUAZ			
7/8-9	87CNTUAZ	1.440 - 1.427	.796 - .766	.535
7/8-14	87FNTUAZ			
1-8	100CNTUAZ	1.627 - 1.614	.922 - .860	.600
1-14	100FNTUAZ			
1 1/8-7	112CNTUAZ	1.814 - 1.801	1.000 - .938	.627
1 1/8-12	112FNTUAZ			
1 1/4-7	125CNTUAZ	2.008 - 1.973	1.140 - 1.078	.720
1 1/4-12	125FNTUAZ			
1 3/8-6	137CNTUAZ	2.197 - 2.159	1.219 - 1.157	.767
1 3/8-12	137FNTUAZ			
1 1/2-6	150CNTUAZ	2.384 - 2.344	1.344 - 1.282	.810
1 1/2-12	150FNTUAZ			
1 3/4-5	175CNTUAZ	2.762 - 2.715	1.532 - 1.406	.986
1 3/4-12	175FNTUAZ			
2-4 1/2	200CNTUAZ	3.137 - 3.086	1.735 - 1.609	1.016
2-12	200FNTUAZ			

1. Alternate manufacturer's identification may be in the form of other colors.

NOTES

MATL.: STEEL

APPROVAL

QC VC 10-14-15

PREVAILING TORQUE PER IFI 100/107, WHERE APPLICABLE

**NTU JAM HEAVY HEX
NYLON INSERT LOCKNUT**



DATE	DRAWN BY	SCALE	UNITS	DWG. TYPE	REV.
9-29-05	MP	NONE	INCH	S	0