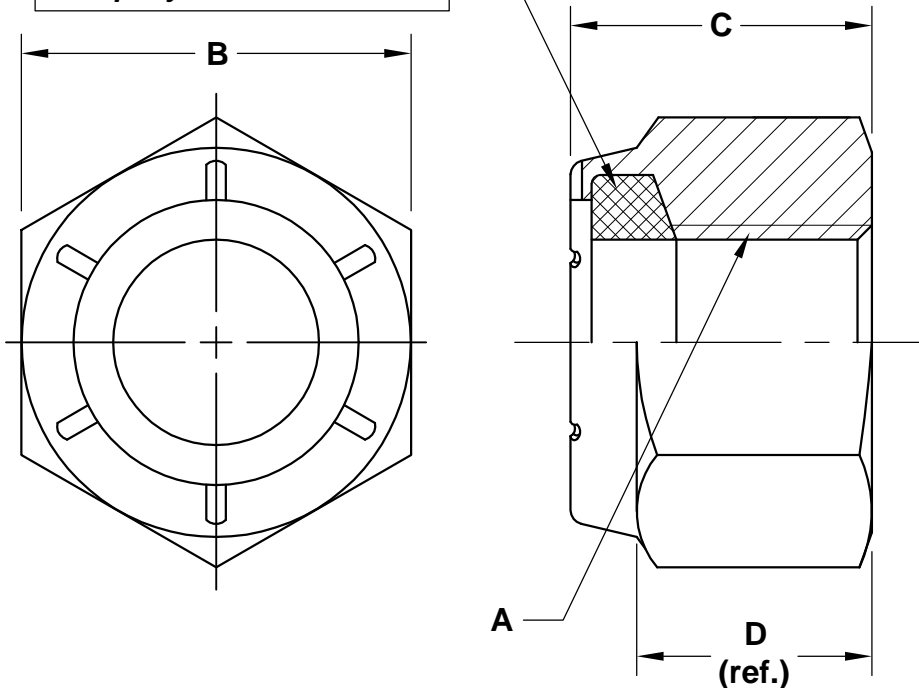


**REVISIONS**

**PART NO. NU**

Orange ring color is the registered manufacturer's I.D. for Aztech Locknut Company.<sup>1</sup>



1. Alternate manufacturer's identification may be in the form of other colors.

SIZE A	ZINC PLATED PART NUMBER	WIDTH ACROSS FLATS max / min B	THICKNESS max / min C	WRENCH HEIGHT D
1/4-20	25CNU-AZ	.503 - .489	.390 - .360	.290
5/16-18	31CNU-AZ	.566 - .551	.453 - .423	.335
3/8-16	37CNU-AZ	.691 - .675	.562 - .532	.392
7/16-14	43CNU-AZ	.754 - .736	.609 - .579	.464
1/2-13	50CNU-AZ	.879 - .861	.718 - .688	.544
1/2-20	50FNU-AZ			
9/16-12	56CNU-AZ	.942 - .922	.812 - .782	.655
9/16-18	56FNU-AZ			
5/8-11	62CNU-AZ	1.067 - 1.045	.874 - .844	.677
5/8-18	62FNU-AZ			
3/4-10	75CNU-AZ	1.255 - 1.231	1.015 - .985	.790
3/4-16	75FNU-AZ			
7/8-9	87CNU-AZ	1.444 - 1.417	1.140 - 1.110	.883
7/8-14	87FNU-AZ			
1-8	100CNU-AZ	1.632 - 1.602	1.312 - 1.250	1.000
1-14	100FNU-AZ			
1 1/8-7	112CNU-AZ	1.820 - 1.788	1.469 - 1.407	1.096
1 1/8-12	112FNU-AZ			
1 1/4-7	125CNU-AZ	2.008 - 1.973	1.672 - 1.610	1.250
1 1/4-12	125FNU-AZ			
1 3/8-6	137CNU-AZ	2.197 - 2.159	1.828 - 1.766	1.376
1 3/8-12	137FNU-AZ			
1 1/2-6	150CNU-AZ	2.384 - 2.344	1.953 - 1.891	1.413
1 1/2-12	150FNU-AZ			
1 3/4-5	175CNU-AZ	2.762 - 2.715	2.376 - 2.250	1.830
1 3/4-12	175FNU-AZ			
2-4 1/2	200CNU-AZ	3.137 - 3.086	2.469 - 2.343	1.750
2-12	200FNU-AZ			

**NOTES**

MATL.: STEEL

**APPROVAL**

QC VC 10-14-05

PREVAILING TORQUE PER IFI 100/107, WHERE APPLICABLE

**NU HEAVY HEX  
NYLON INSERT LOCKNUT**



DATE	DRAWN BY	SCALE	UNITS	DWG. TYPE	REV.
9-29-05	MP	NONE	INCH	S	0