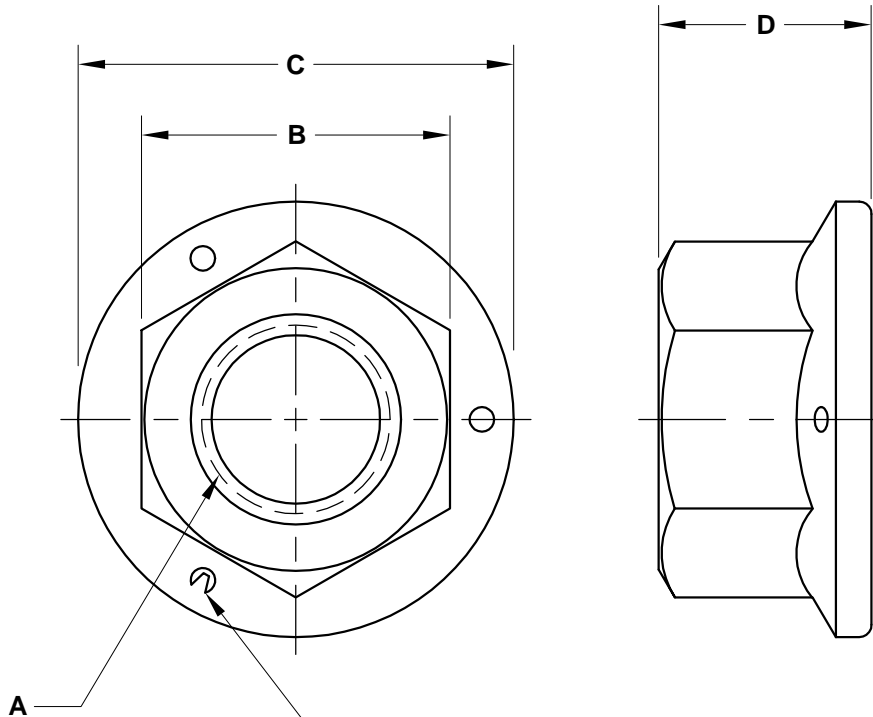


**REVISIONS**

**PART NO. RFN5**



**Manufacturers I.D. and grade markings per IFI 100/107 or SAE J995**

SIZE A	ZINC PLATED PART NUMBER	WIDTH ACROSS FLATS B	FLANGE DIAMETER C	NUT THICKNESS D
1/4-20	25CRFNFZ	.438 - .428	.594 MAX.	.300 MAX.
1/4-28	25FRFNFZ			
5/16-18	31CRFNFZ	.500 - .489	.680 MAX.	.365 MAX.
5/16-24	31FRFNFZ			
3/8-16	37CRFNFZ	.562 - .551	.810 MAX.	.425 MAX.
3/8-24	37FRFNFZ			
7/16-14	43CRFNFZ	.688 - .675	.937 MAX.	.495 MAX.
7/16-20	43FRFNFZ			
1/2-13	50CRFNFZ	.750 - .736	1.070 MAX.	.555 MAX.
1/2-20	50FRFNFZ			
9/16-12	56CRFNFZ	.875 - .861	1.190 MAX.	.625 MAX.
9/16-18	56FRFNFZ			
5/8-11	62CRFNFZ	.938 - .922	1.330 MAX.	.690 MAX.
5/8-18	62FRFNFZ			
3/4-10	75CRFNFZ	1.125 - 1.088	1.585 MAX.	.825 MAX.
3/4-16	75FRFNFZ			

**NOTES**

**MATL.: STEEL**

**APPROVAL**

QC VC 10-27-05

**FLANGE NUT, GRADE 5**



DATE	DRAWN BY	SCALE	UNITS	DWG. TYPE	REV.
10-27-05	MP	NONE	INCH	S	0