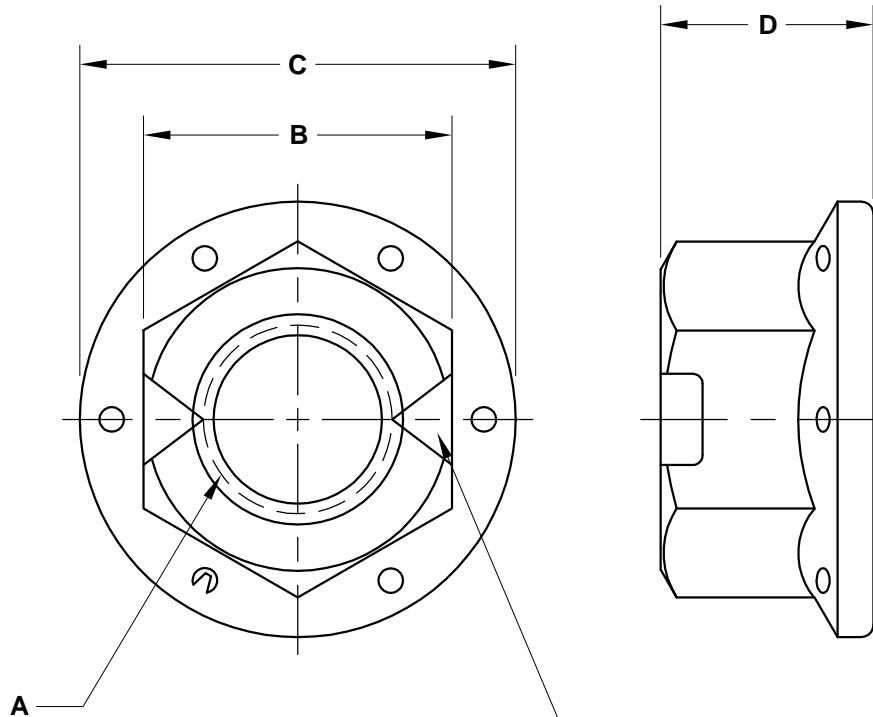


REVISIONS

PART NO. RFTG



SHAPE, SIZE AND LOCATION OF THE PREVAILING TORQUE ELEMENT OPTIONAL

| SIZE A | CADMIUM PLATED PART NUMBER | WIDTH ACROSS FLATS B | FLANGE DIAMETER C | NUT THICKNESS D |
|-----------|-------------------------------------|----------------------------|-------------------------|-----------------------|
| 1/4-20 | 25CRFTGC | .438 - .428 | .560 MAX. | .300 MAX. |
| 1/4-28 | 25FRFTGC | | | |
| 5/16-18 | 31CRFTGC | .502 - .489 | .680 MAX. | .365 MAX. |
| 5/16-24 | 31FRFTGC | | | |
| 3/8-16 | 37CRFTGC | .5645 - .551 | .810 MAX. | .425 MAX. |
| 3/8-24 | 37FRFTGC | | | |
| 7/16-14 | 43CRFTGC | .6895 - .675 | .930 MAX. | .495 MAX. |
| 7/16-20 | 43FRFTGC | | | |
| 1/2-13 | 50CRFTGC | .752 - .736 | 1.070 MAX. | .555 MAX. |
| 1/2-20 | 50FRFTGC | | | |
| 9/16-12 | 56CRFTGC | .877 - .861 | 1.190 MAX. | .625 MAX. |
| 9/16-18 | 56FRFTGC | | | |
| 5/8-11 | 62CRFTGC | .9395 - .922 | 1.330 MAX. | .690 MAX. |
| 5/8-18 | 62FRFTGC | | | |
| 3/4-10 | 75CRFTGC | 1.127 - 1.088 | 1.585 MAX. | .825 MAX. |
| 3/4-16 | 75FRFTGC | | | |

NOTES

MATL.: STEEL

APPROVAL

QC VC 10-31-05

UNLESS OTHERWISE INDICATED, DIMENSIONAL, MECHANICAL AND PERFORMANCE REQUIREMENTS PER IFI 100/107

**FLANGE NUT TECHLOCK
GRADE G**



| DATE | DRAWN BY | SCALE | UNITS | DWG. TYPE | REV. |
|----------|----------|-------|-------|-----------|------|
| 10-28-05 | MP | NONE | INCH | S | 0 |