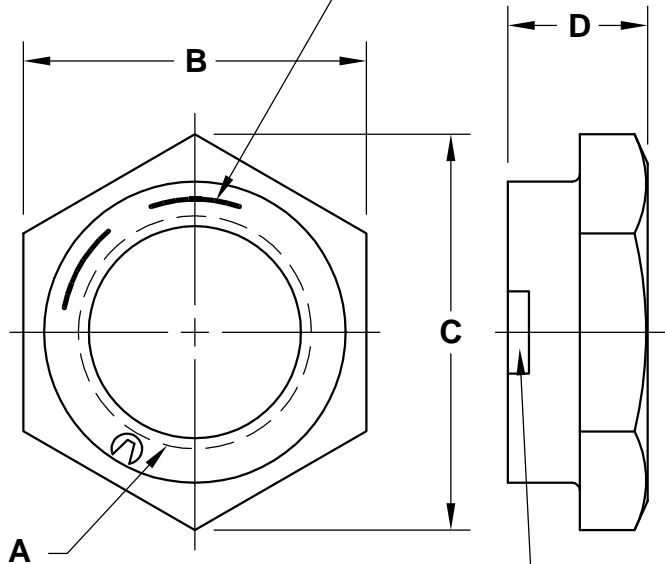


REVISIONS

PART NO. TROC

NOTE:

Manufacturers I.D. and grade markings per SAE J995 or IFI 100/107



NOTE:

Shape, size and location of the locking element optional

SIZE A	CADMIUM PLATED PART NUMBER	ZINC PLATED PART NUMBER	PHOSPHATE PLATED PART NUMBER	WIDTH ACROSS FLATS B	WIDTH ACROSS CORNERS C	NUT THICKNESS D
1 1/8-12	112FTROCC	112FTROCZ	112FTROC4	1.6895 - 1.631	1.949 - 1.859	.639 - .579
1 1/8-7	112CTROCC	112CTROCZ	112CTROC4			
1 1/4-12	125FTROCC	125FTROCZ	125FTROC4	1.8770 - 1.812	2.165 - 2.066	.751 - .687
1 1/4-7	125CTROCC	125CTROCZ	125CTROC4			
1 3/8-12	137FTROCC	137FTROCZ	137FTROC4	2.0645 - 1.994	2.382 - 2.273	.815 - .747
1 3/8-6	137CTROCC	137CTROCZ	137CTROC4			
1 1/2-12	150FTROCC	150FTROCZ	150FTROC4	2.2520 - 2.175	2.598 - 2.480	.880 - .808
1 1/2-6	150CTROCC	150CTROCZ	150CTROC4			

NOTES

MATL.: STEEL

APPROVAL

QC VC 10-10-05

**THIN COLLAR LOCKNUT
GRADE C**

UNLESS OTHERWISE INDICATED, DIMENSIONAL, MECHANICAL AND PERFORMANCE REQUIREMENTS PER IFI 100/107, AS APPLICABLE



DATE	DRAWN BY	SCALE	UNITS	DWG. TYPE	REV.
9-29-05	MP	NONE	INCH	S	0