

Size A	Part No.*	Across Flats B Max. Min.	Thickness C Max. Min.	Wrench Height D Min.	Bearing Dia. Min.	Proof Load Min. N	1 st Install Max. Nm	1 st Removal Min. Nm	5 th Removal Min. Nm	Weight /1000 Lb.	Carton Qty.
M5x0.8	.5CALV8#	8 7.78	5.1 4.8	2.75	6.9	11,500	1.6	0.29	0.2	3.60	11,000
M6x1	.6CALV8#	10 9.78	6 5.7	3.3	8.9	16,300	3	0.45	0.3	5.64	7,000
M8x1.25	.8CALV8#	13	8	4.4	11.6	30,400	6	0.85	0.6	12.3	3,200
M8x 1	.8FALV8#	12.73	7.5	4.4		40,800					
M10x1.5	.10CALV8#	17 16.73	10 9	5.5	15.6	48,100	10.5	1.5	1	26.4	1,500
M10x1.25	.10FALV8#					63,600					
M10x1	.10XALV8#					67,100					
M12x1.75	.12CALV8#	19 18.67	12 11	6.6	17.4	70,800	15.5	2.3	1.6	35.9	1,100
M12x1.5	.12FALV8#					92,500					
M12x1.25	.12XALV8#					96,700					
M14x2	.14CALV8#	22	14	7.7	20.5	96,000	24	3.3	2.3	52.7	750
M14x1.5	.14FALV8#	21.67	12	7.7	20.5	131,200					
M16x2	.16CALV8#	24	16	8.8	22.5	131,900	32	4.5	3	79.0	500
M16x1.5	.16FALV8#	23.67	14	8.8	22.5	175,300					
M18x2.5	.18CALV8#	27 26.16	18 16	9.9	24.9	176,600	42	6	4.2	137	300
M18x2	.18FALV8#					210,100					
M18x1.5	.18XALV8#					221,500					

M20 and larger see page 2

DIN 980 V is superseded by ISO 7042

*Coating Codes (substitute for "#" in the part number).
Other available finishes may not be listed.

[blank] – Unfinished Plain

1 – Zinc/Yellow per ASTM F1941 - Fe/Zn 5C

2 – Zinc/Clear per ASTM F1941 - Fe/Zn 5AT (RoHS)

3 – Cadmium/Clear per ASTM F1941 - Fe/Cd 5A

4 – Phosphate/Oil per ASTM F 1137 Grade D

C – Commercial Cadmium/Clear

Y – Commercial Zinc/Yellow

Z – Commercial Zinc/Clear (RoHS)

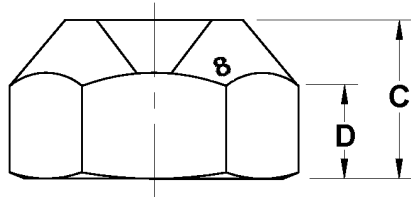
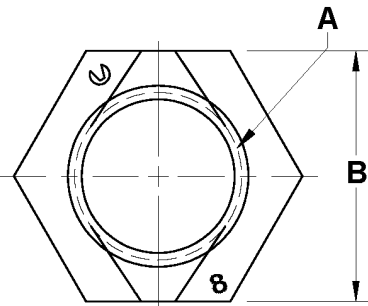
Notes:

1. These items are compliant to all requirements per DIN 980 Type V
2. Material and Mechanical Performance per DIN 267 part 15
3. Threads as specified per DIN 13 part 12
4. Parts listed are not all stocked – contact Aztech sales for lead times
5. Latest specifications were used on the date of print release

AUTOMATION LOCKNUTS DIN 980 V CLASS 8



Date	By	Scale	Units	Type	Rev.
10-1-2014	SEK	None	mm	S	A



Size A	Part No.*	Across Flats B Max. Min.	Thickness C Max. Min.	Wrench Height D Min.	Bearing Dia. Min.	Proof Load Min. N	1 st Install Max. Nm	1 st Removal Min. Nm	5 th Removal Min. Nm	Weight /1000 Lb.	Carton Qty.
M18 and smaller see page 1											
M20x2.5	.20CALV8#	30 29.16	20 18	11	27.7	225,400	54	7.5	5.3	158	250
M20x2	.20FALV8#					265,700					
M20x1.5	.20XALV8#					280,200					
M22x2.5	.22CALV8#	32 31	22 20	12.2	29.5	278,800	68	9.5	6.5	226	175
M22x2	.22FALV8#					327,500					
M22x1.5	.22XALV8#					343,000					
M24x3	.24CALV8#	36	24	13.2	33.2	324,800	80	11.5	8	316	125
M24x2	.24FALV8#	35	22	13.2	33.2	395,500					
M27x3	.27CALV8#	41	27	14.8	38	422,300	94	13.5	10	395	100
M27x2	.27FALV8#	40	25	14.8	38	510,900					
M30x3.5	.30CALV8#	46	30	16.5	42.7	516,100	108	16	12	465	85
M30x2	.30FALV8#	45	28	16.5	42.7	639,600					
M33x3.5	.33CALV8#	50	33	18.2	46.6	638,500	122	18	14	527	75
M33x2	.33FALV8#	49	31	18.2	46.6	783,800					
M36x4	.36CALV8#	55	36	19.8	51.1	751,600	136	21	16	608	65
M36x3	.36FALV8#	53.8	34	19.8	51.1	942,800					
M39x4	.39CALV8#	60	39	21.5	55.9	897,900	150	23	18	658	60
M39x3	.39FALV8#	58.8	37	21.5	55.9	1,123,000					
DIN 980 V is superseded by ISO 7042											

*Coating Codes (substitute for "#" in the part number).
Other available finishes may not be listed.

- [blank] – Unfinished Plain
- 1 – Zinc/Yellow per ASTM F1941 - Fe/Zn 5C
- 2 – Zinc/Clear per ASTM F1941 - Fe/Zn 5AT (RoHS)
- 3 – Cadmium/Clear per ASTM F1941 - Fe/Cd 5A
- 4 – Phosphate/Oil per ASTM F 1137 Grade D
- C – Commercial Cadmium/Clear
- Y – Commercial Zinc/Yellow
- Z – Commercial Zinc/Clear (RoHS)

- Notes:
1. These items are compliant to all requirements per DIN 980 Type V
 2. Material and Mechanical Performance per DIN 267 part 15
 3. Threads as specified per DIN 13 part 12
 4. Parts listed are not all stocked – contact Aztech sales for lead times
 5. Latest specifications were used on the date of print release

AUTOMATION LOCKNUTS DIN 980 V CLASS 8



Date	By	Scale	Units	Type	Rev.
9-12-2014	SEK	None	mm	S	A